

MEDITERRANEAN SWORDFISH

George Tserpes

HCMR

RACMED - Oct 9, 2012



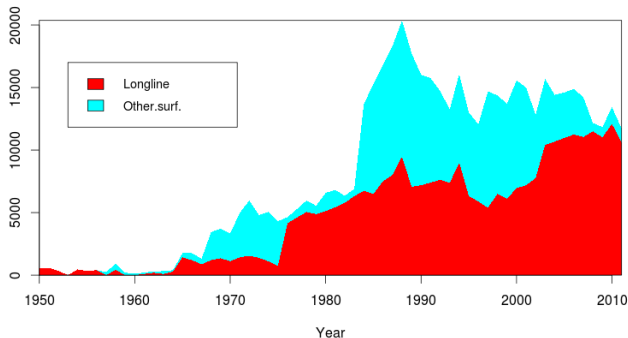
Summary information on the stock status

- Unique Stock (limited mixing with Atlantic stocks)
- Unique biological characteristics (growth, maturity, etc)
- Substocks?



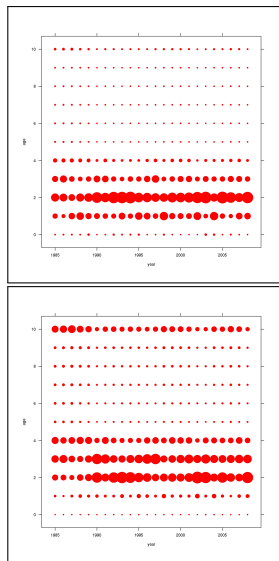
Fisheries

- Main gears: longlines and gillnets
- Catches around 12000-16000 t in the last 15 years
- 11750 t in 2011 (the lowest observed in the last 15 years)



Catch composition

- Juveniles dominate the catches (50-70% in terms of numbers, 20-35% in terms of weight)



Stock status (*the bad news*)

Last assessment: 2010 using catch data up to 2008

High degree of uncertainty

- Stock biomass is significantly below (54%) the level which supports maximum sustainable yield

Stock status (*the bad news*)

Last assessment: 2010 using catch data up to 2008

High degree of uncertainty

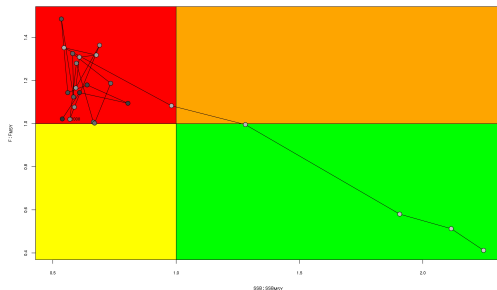
- Stock biomass is significantly below (54%) the level which supports maximum sustainable yield
- Current (2008) fishing mortality slightly higher than the optimum

Stock status (*the bad news*)

Last assessment: 2010 using catch data up to 2008

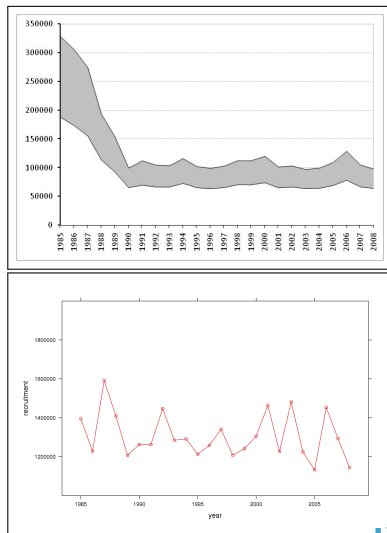
High degree of uncertainty

- Stock biomass is significantly below (54%) the level which supports maximum sustainable yield
- Current (2008) fishing mortality slightly higher than the optimum



Stock status (*the good? news*)

- Biomass and recruitment levels stable over the last 15 years



Management Scenarios

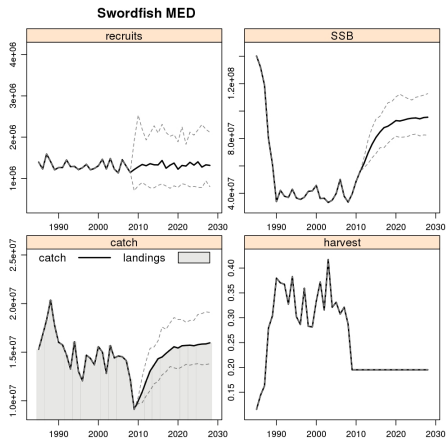
- Seasonal closures of different duration
- Capacity reduction 20%
- Catch quota

Were considered:

- *Uncertainties about recruitment*
- *Risk of stock collapse*

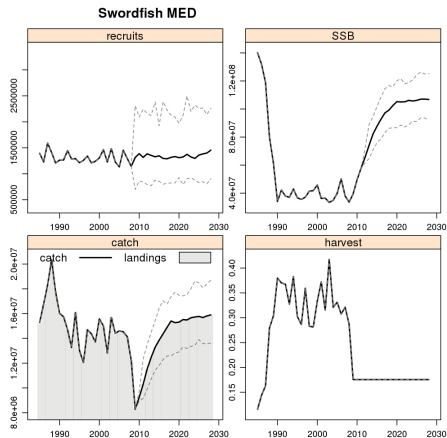
Some scenario results

Current (2008) status



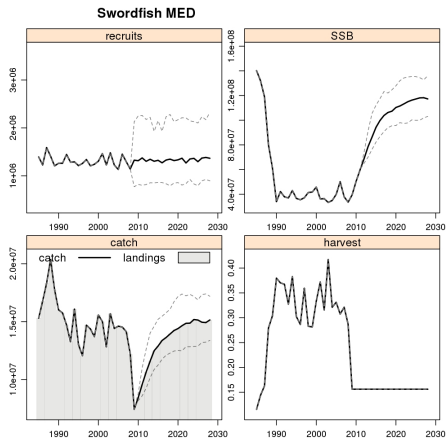
Some scenario results

2-month fishery closure



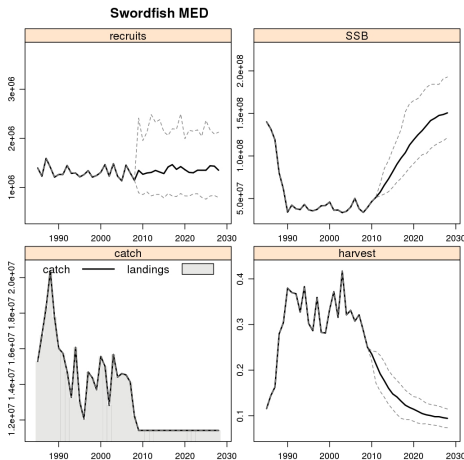
Some scenario results

Capacity reduction (20%)



Some scenario results

Low quota (11430 t)



Management scenarios (main conclusions)

- Stock rebuilding to the middle 80's SSB levels can be achieved only in the case of drastic seasonal closures (up to 6 months) or relatively low quotas

Management scenarios (main conclusions)

- Stock rebuilding to the middle 80's SSB levels can be achieved only in the case of drastic seasonal closures (up to 6 months) or relatively low quotas
- SSB increases up to the optimum levels can be achieved within 2-3 generations (8-12 years) even under the current management status if F is kept at the 2008 levels. A small probability (<5%) of stock collapse still exists in this case

Management scenarios (main conclusions)

- Stock rebuilding to the middle 80's SSB levels can be achieved only in the case of drastic seasonal closures (up to 6 months) or relatively low quotas
- SSB increases up to the optimum levels can be achieved within 2-3 generations (8-12 years) even under the current management status if F is kept at the 2008 levels. A small probability (<5%) of stock collapse still exists in this case
- Long seasonal closures would result in significant catch reductions within the first few years after their application

Management scenarios (main conclusions)

- Stock rebuilding to the middle 80's SSB levels can be achieved only in the case of drastic seasonal closures (up to 6 months) or relatively low quotas
- SSB increases up to the optimum levels can be achieved within 2-3 generations (8-12 years) even under the current management status if F is kept at the 2008 levels. A small probability (<5%) of stock collapse still exists in this case
- Long seasonal closures would result in significant catch reductions within the first few years after their application
- Capacity reductions of 20% (assuming no compensation in effort) could rebuild the stock to optimum SSB levels

Management scenarios (main conclusions)

- Stock rebuilding to the middle 80's SSB levels can be achieved only in the case of drastic seasonal closures (up to 6 months) or relatively low quotas
- SSB increases up to the optimum levels can be achieved within 2-3 generations (8-12 years) even under the current management status if F is kept at the 2008 levels. A small probability (<5%) of stock collapse still exists in this case
- Long seasonal closures would result in significant catch reductions within the first few years after their application
- Capacity reductions of 20% (assuming no compensation in effort) could rebuild the stock to optimum SSB levels

👉 *Next assessment most likely in 2014*



Thank you!